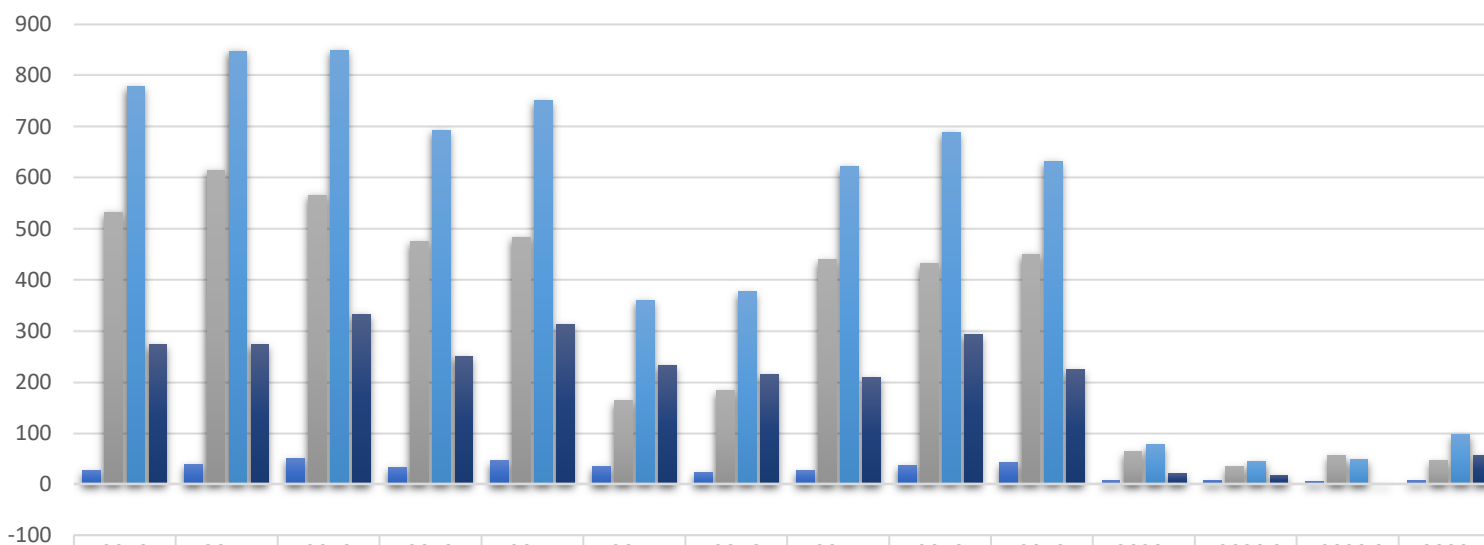
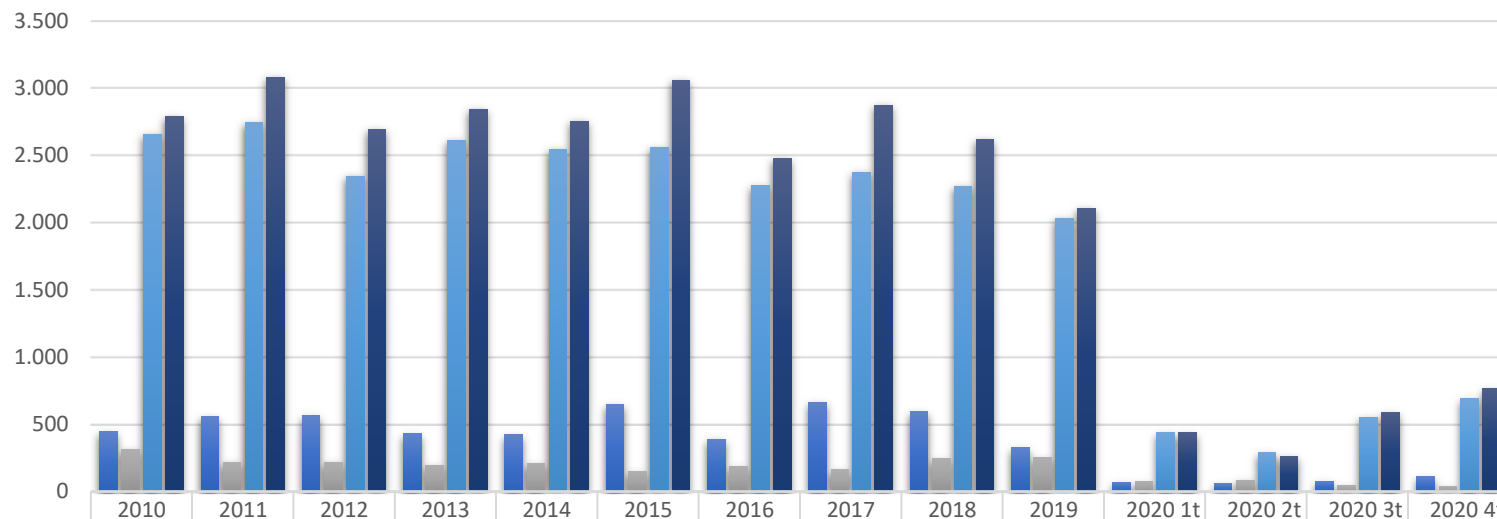


Consumo Aparente - Tubos sin costura



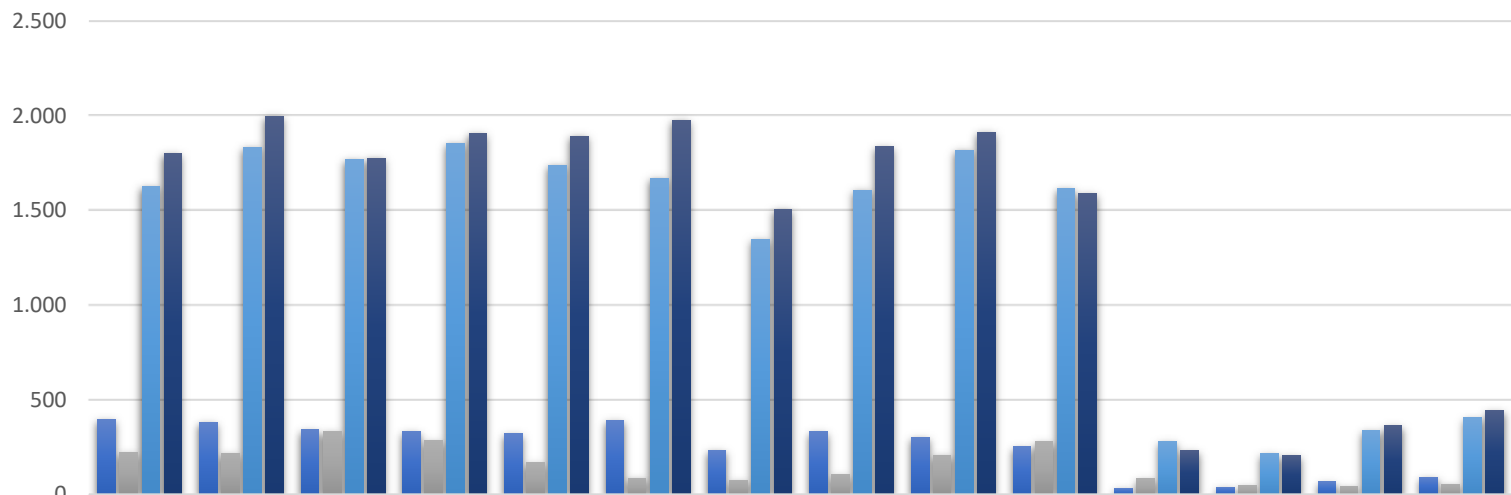
	2010	2011	2012	2013	2014	2015	2016	2017	2018	2019	2020 1t	2020 2t	2020 3t	2020 4t
■ IMPO Ktons	27	39	50	33	45	35	23	26	37	42	6	7	5	6
■ EXPO Ktons	532	614	566	475	483	163	184	439	432	450	63	34	56	46
■ PRODUCCION Ktons	778	848	849	692	750	360	376	622	688	632	77	45	49	97
■ CONS.APAR. Ktons	273	273	333	250	312	232	215	209	293	224	20	18	-2	57

Consumo Aparente - Productos Planos



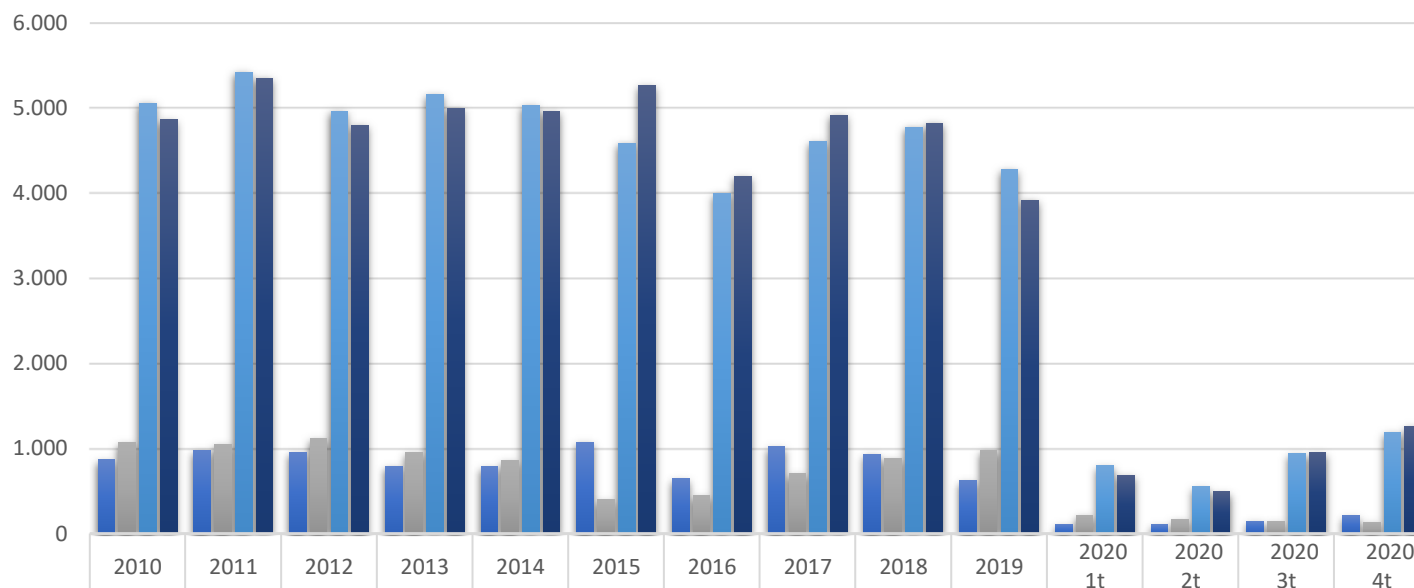
	2010	2011	2012	2013	2014	2015	2016	2017	2018	2019	2020 1t	2020 2t	2020 3t	2020 4t
■ IMPO Ktons	445	558	563	428	421	648	389	663	593	325	69	57	76	109
■ EXPO Ktons	313	219	219	196	209	148	186	162	244	251	70	84	42	36
■ PRODUCCION Ktons	2.656	2.742	2.348	2.611	2.546	2.556	2.274	2.373	2.271	2.033	439	290	554	690
■ CONS. APAR. Ktons	2.788	3.081	2.692	2.843	2.758	3.056	2.477	2.874	2.620	2.107	437	263	588	764

Consumo Aparente - Productos Largos



	2010	2011	2012	2013	2014	2015	2016	2017	2018	2019	2020 1t	2020 2t	2020 3t	2020 4t
■ IMPO Ktons	398	383	343	335	322	394	235	332	304	254	35	40	68	93
■ EXPO Ktons	223	218	335	285	168	88	76	104	210	280	84	48	43	54
■ PRODUCCION Ktons	1.626	1.832	1.768	1.855	1.739	1.670	1.347	1.608	1.818	1.614	281	217	339	405
■ CONS. APAR. Ktons	1.801	1.997	1.776	1.905	1.893	1.976	1.506	1.836	1.912	1.588	233	209	364	444

Consumo Aparente Total



	2010	2011	2012	2013	2014	2015	2016	2017	2018	2019	2020 1t	2020 2t	2020 3t	2020 4t
■ IMPORTACIONES Ktons	870	980	956	796	788	1.077	647	1.021	934	621	110	103	149	208
■ EXPORTACIONES Ktons	1.068	1.051	1.120	956	860	399	446	705	886	981	217	165	141	136
■ PRODUC TERMINADA Ktons	5.060	5.422	4.965	5.158	5.035	4.586	3.997	4.603	4.777	4.279	797	552	942	1.192
■ CONSUMO APARENTE Ktons	4.862	5.351	4.801	4.998	4.963	5.264	4.198	4.919	4.825	3.919	690	490	951	1.264