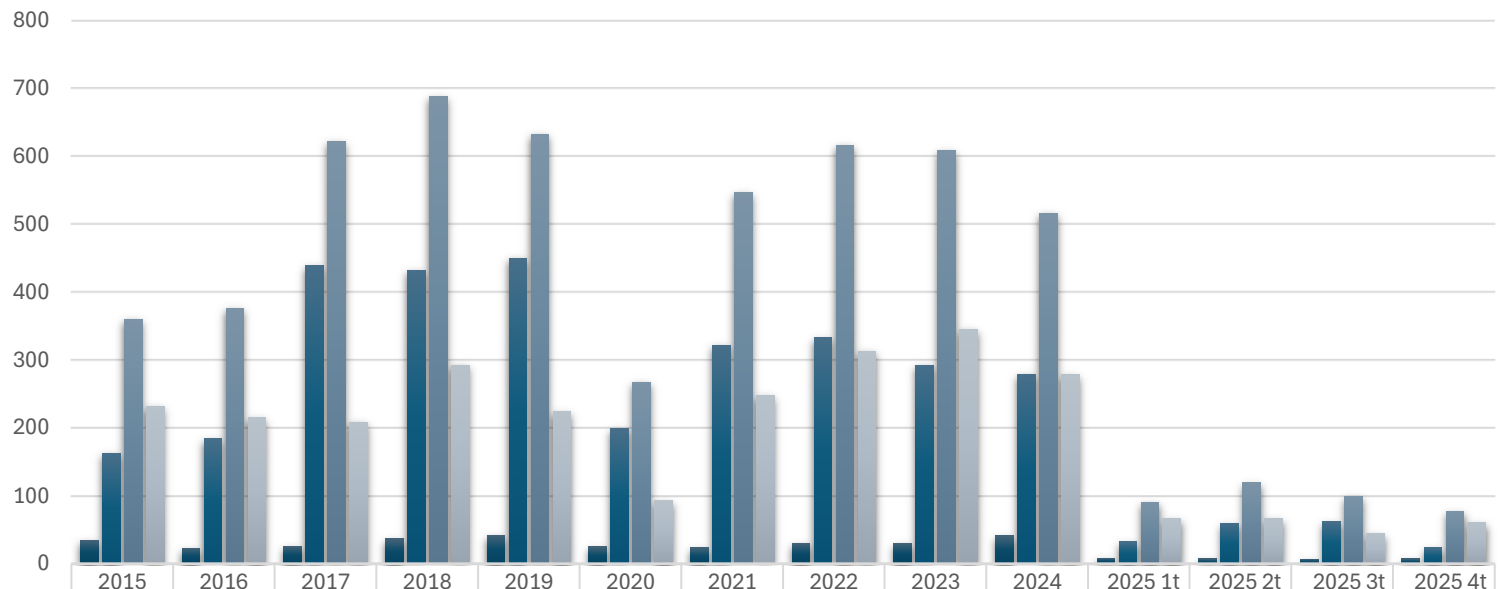
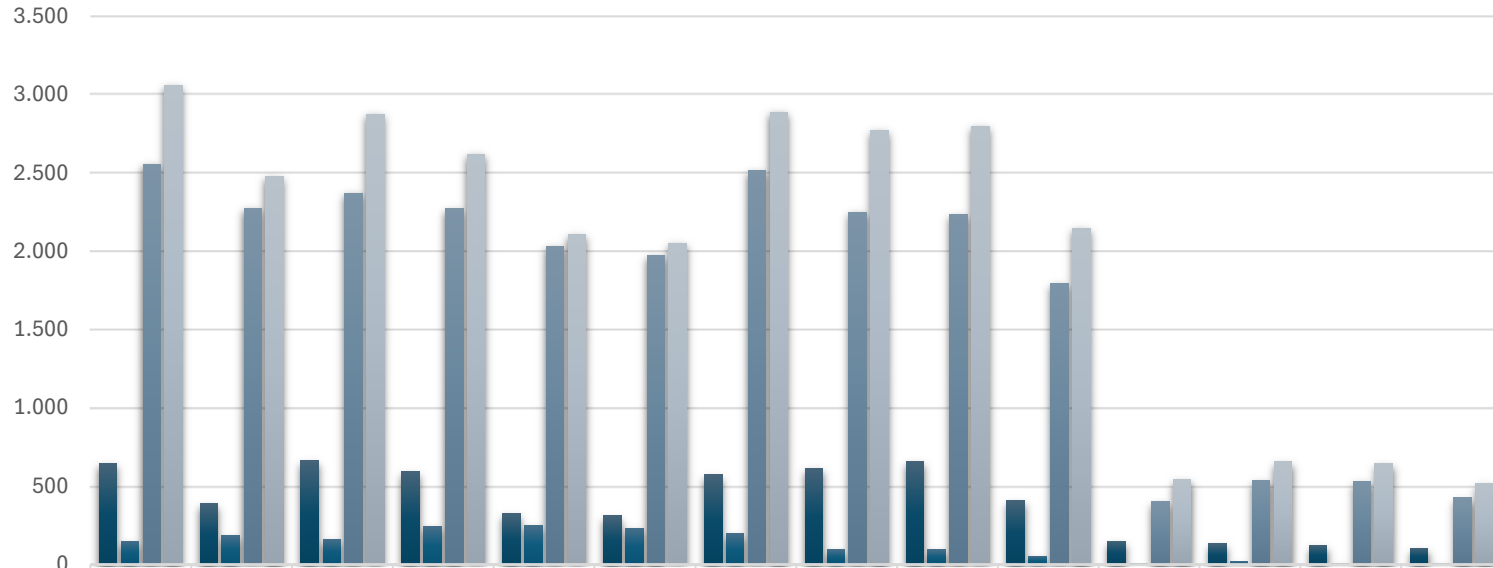


Consumo Aparente - Tubos sin costura



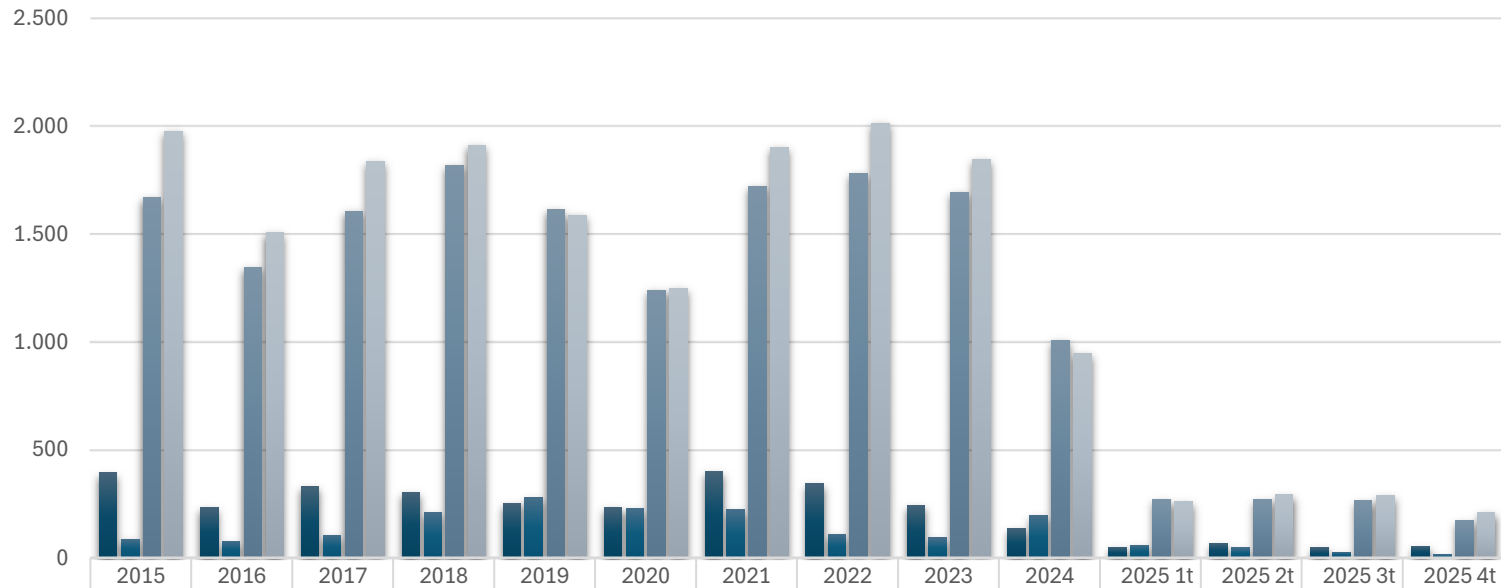
■ IMPO Ktons	35	23	26	37	42	25	24	30	30	41	8	7	7	7
■ EXPO Ktons	163	184	439	432	450	199	322	333	293	279	32	60	62	24
■ PRODUCCION Ktons	360	376	622	688	632	267	546	616	608	516	91	119	100	77
■ CONS.APAR. Ktons	232	215	209	293	224	93	248	313	345	278	66	67	45	61

Consumo Aparente - Productos Planos



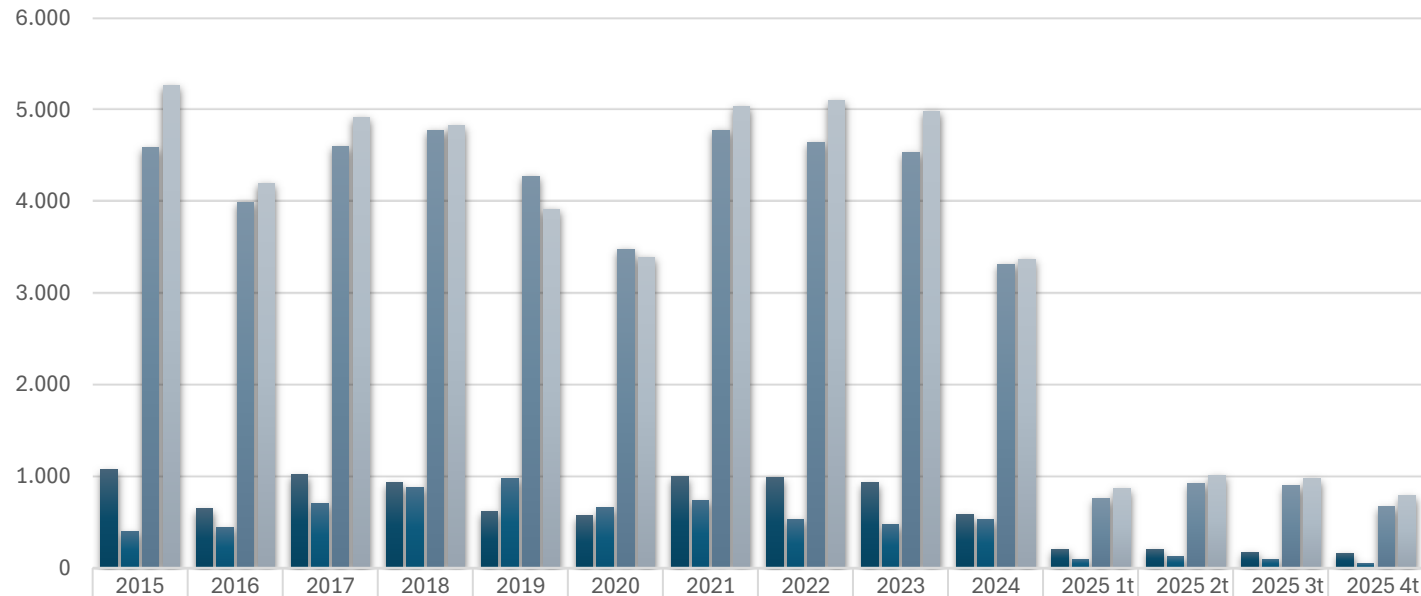
	2015	2016	2017	2018	2019	2020	2021	2022	2023	2024	2025 1t	2025 2t	2025 3t	2025 4t
■ IMPO Ktons	648	389	663	593	325	310	572	616	658	407	148	133	122	102
■ EXPO Ktons	148	186	162	244	251	231	197	94	94	54	4	17	9	8
■ PRODUCCION Ktons	2.556	2.274	2.373	2.271	2.033	1.974	2.514	2.249	2.233	1.795	402	540	533	425
■ CONS. APAR. Ktons	3.056	2.477	2.874	2.620	2.107	2.052	2.889	2.771	2.797	2.148	546	655	646	519

Consumo Aparente - Productos Largos



■ IMPO Ktons	394	235	332	304	254	236	401	344	245	137	51	68	48	54
■ EXPO Ktons	88	76	104	210	280	228	222	109	93	198	60	46	26	15
■ PRODUCCION Ktons	1.670	1.347	1.608	1.818	1.614	1.242	1.722	1.779	1.693	1.008	272	272	268	174
■ CONS. APAR. Ktons	1.976	1.506	1.836	1.912	1.588	1.249	1.901	2.014	1.845	947	262	294	290	213

Consumo Aparente Total



■ IMPORTACIONES Ktons	1.077	647	1.021	934	621	571	997	990	933	586	207	208	177	163
■ EXPORTACIONES Ktons	399	446	705	886	981	659	741	536	480	530	97	123	97	46
■ PRODUC TERMINADA Ktons	4.586	3.997	4.603	4.777	4.279	3.483	4.782	4.644	4.534	3.319	764	931	901	676
■ CONSUMO APARENTE Ktons	5.264	4.198	4.919	4.825	3.919	3.395	5.037	5.098	4.987	3.373	875	1.016	980	793